

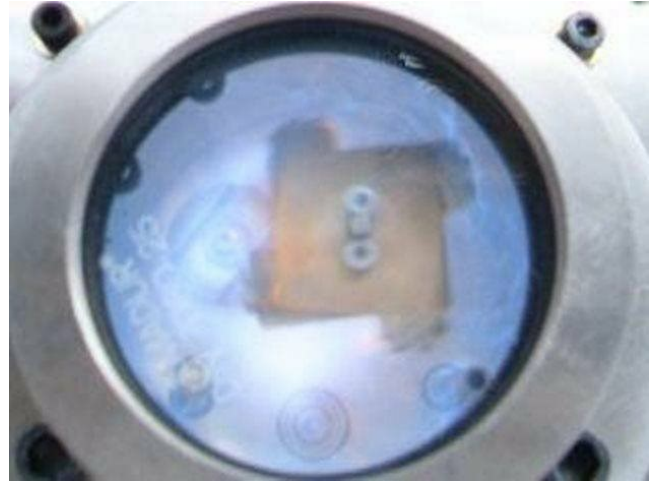
A019-OG02 - ZUSAMMENSETZUNG VON EXPLOSIVEN MISCHUNGEN

APPLICATION NOTE A019-OG02

EXPLOSIVE MIXTURE COMPOSITION

Accuracy, reliability and safety are requirements for instrumentation used in test equipment for ATEX environments, when gas mixtures of precise composition are necessary.

Instead of buying ready-to-use mixtures, it is cheaper and more simple in logistics, to use self-made mixtures for testing. Instead of 30 bottles with various expensive mixtures supplied by gas manufacturers, only 6 bottles with single gases have to be purchased



Application requirements

System for Intrinsic safety test including gas delivery and mixing and ignition chamber acc. to BS EN 50020:2002. Explosive mixtures of certain composition has to be delivered to the ignition chamber in a certain time and amount. Each test can be processed automatically or manually. After test completion ignition chamber is automatically purged.

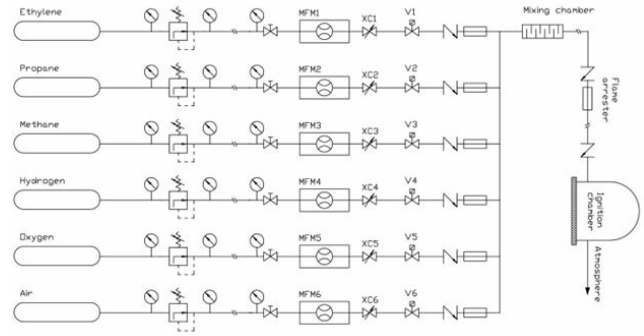
Important topics

- Accuracy of mixtures composition
 - Safety test by explosion
 - Automation of test
-

Process solution

Intrinsic safety test

The intrinsic safety test apparatus consists of ignition chamber with electrodes system and delivery and mixing of gases system. Ethylene, Propane, Methane, Hydrogen, Oxygen and Air are delivered from gas cylinders and mixed on flow. Various explosive mixtures are produced according to BS EN 50020:2002. The mixture of required accuracy is used to fill ignition chamber, which has ignition turntable and electrodes system which can test if circuit under test can cause an explosion. Each test starts with checking ignition ability of mixture and electrodes. The RLC standard circuit have to cause explosion. Thus each test starts with explosion which requires certain safety precaution to avoid explosion in gas supplying lines and flow meters. Some redundant flame arresters are applied as well as check valve.



Flow scheme

The gases are delivered by explosion protected mass flow controllers controlled by a readout/control unit and a PLC which controls all the test timing and mixture composition. Some mixtures are pre-installed in the PLC, some other can be programmed by the user.

Recommended Products



EX-FLOW F-201AX

Min. Bereich 0,1...5 l/min
 Max. Bereich 2...100 l/min
 Druckstufe 64 bar
 ATEX Zulassung Kat.2, Zone 1
 IP65 Design



IN-PRESS P-502CI

Min. Druck 2...100 mbar
 Max. Druck 1,28...64 bar
 Absolut- oder Überdruck
 kompaktes IP65 Design



IN-FLOW F-201AI

Min. Bereich 0,4...20 l/min
 Max. Bereich 0,6...100 l/min
 Druckstufe 64 bar
 Kompaktes IP65 Design
 Hohe Genauigkeit und Wiederholbarkeit

BRONKHORST DEUTSCHLAND NORD GMBH

Südfeld 1b

59174 Kamen (GER)

Tel. [+49 230792512-0](tel:+492307925120)

info@bronkhorst-nord.de



Diese Webseite verwendet Cookies

Wir verwenden Cookies, um Inhalte und Anzeigen zu personalisieren, Funktionen für soziale Medien anbieten zu können und die Zugriffe auf unsere Website zu analysieren. Außerdem geben wir Informationen zu Ihrer Verwendung unserer Website an unsere Partner für soziale Medien, Werbung und Analysen weiter. Unsere Partner führen diese Informationen möglicherweise mit weiteren Daten zusammen, die Sie ihnen bereitgestellt haben oder die sie im Rahmen Ihrer Nutzung der Dienste gesammelt haben. Sie geben Einwilligung zu unseren Cookies, wenn Sie unsere Webseite weiterhin nutzen.

- Notwendig
- Präferenzen
- Statistiken
- Marketing
- Details zeigen

OK

