

DATASHEET FLOW CONTROLLERS FOR LIQUEFIED GAS -A115

APPLICATION NOTE

Flow controllers for liquefied gas dosing

"You know what you pump - in real-time."

Chemical reactions for extraction purposes are conducted at high pressures and require the supply of precise amounts of organic solvents. To replace traditional organic solvents, greener and more effective alternatives such as liquefied gases are considered.

Precise dosing of liquid/gas substances can be considered as a challenge. However, when combining **flow controllers** with **high pressure pumps**, a simple yet complete solution is created to accurately dose liquefied gases at high pressures.

A liquefied gas is a gas at atmospheric pressure and room temperature, which is turned into a liquid by cooling or compression.



Application requirements

Liquefied gases have to be dosed in the liquefied state, which operates at high pressures (up to hundreds of bars). For accurate dosing of liquefied gases, the process conditions, especially pressure and temperature, have to be such that outgassing of the liquid will be avoided. Especially at low flows, it should be monitored that the required amount of liquid is actually dosed.

Important topics

- Avoid outgassing of liquids
 - Dosing at high pressures
 - Accurate flow measurement
-

Process solution

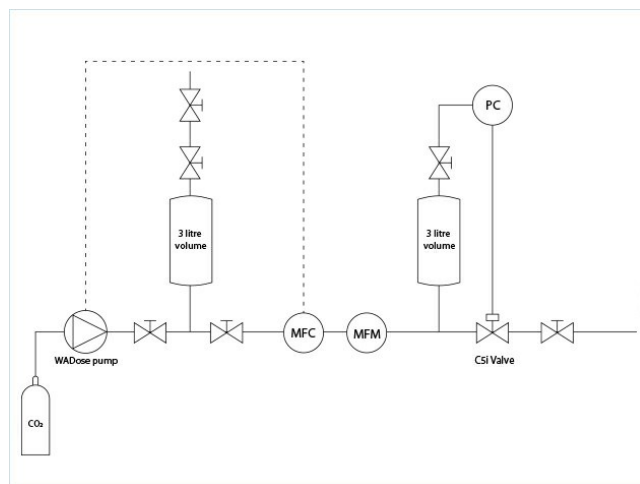
The process solution for dosing liquefied gases consists of a WADose High Pressure Lite pump with an attached heat exchanger, combined with a Bronkhorst Coriolis flow controller and an EL-PRESS pressure meter. The function of the heat exchanger is to cool the pump head to below freezing temperature, in order to stimulate liquid forming and to prevent cavitation and outgassing. This to avoid pressure fluctuations and an unsteady liquid flow when dosing the chemical compounds.

The combination of the WADose piston pump and the flow controller allows for an **accurate dosing** of the liquefied gases. Stand-alone piston pumps are not hermetically tight and exhibit wear over time. Therefore, their setpoint may deviate from the real amount of chemical compound dosed, which is especially at stake when dosing low flows in the range of ml/min. In the current combination, the dosed quantity is accurately measured in-situ using the flow controller, and this device controls the pump by adjusting the flow. This self-monitoring control circuit works continuously, making sure that the solution doses what it should do, so that 'you know what you pump' in real-time. Prior to using this solution, the supply of liquefied gases typically occurred uncontrolled, thus lacking necessary precision.

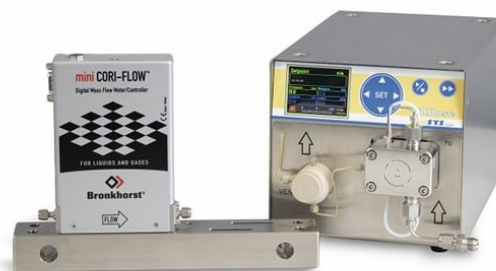
This process solution boosts liquefied gas, typically from a gas cylinder, into a liquid at a higher pressure of about 200 bars. The pressure is monitored by a digital electronic pressure meter - for measuring the process pressure as well as for safety functionality. This is to be sure that the pressure does not get higher than the devices or vessels in the process can withstand, to protect those components. No extra safety relief valves are necessary in this way.

In addition to the mass flow rate, the flow controller also continuously measures the density of the chemical compound. This is an extra measure of monitoring whether or not the compound is fully in its liquid state - and to which can be responded immediately. Also, the temperature of the dosed compound is monitored by the mass flow controller.

This pump/controller combination is a complete plug-and-play solution without any engineering hours needed to be spent. Control parameters are easy to modify using the intuitive interface.



Flow scheme



Special version WADose High Pressure Lite pump (with stainless steel pump and PEEK pressure sensor) with Coriolis mass flow meter

Recommended Products



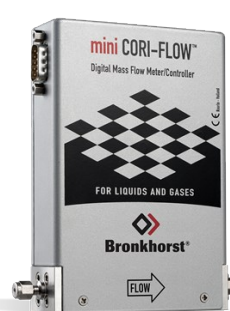
MINI CORI-FLOW™ M13

Flow range 0...2000 g/h
Pressure rating 200 bar
Independent of fluid properties
High accuracy, fast response



EL-PRESS P-502C

Min. pressure 2...100 mbar
Max. pressure 1,28...64 bar
Absolute or gauge pressure
High accuracy



MINI CORI-FLOW™ ML120V00

Flow range 0...200 g/h
Pressure rating 200 bar
Independent of fluid properties
High accuracy, fast measurement



BRONKHORST (UK) LTD

1 Kings Court

Willie Snaith Road

Newmarket Suffolk CB8 7TG

Tel. [+44 1223 833222](tel:+441223833222)

sales@bronkhorst.co.uk

