

# DATASHEET M14

## mini CORI-FLOW™ M14

Low Flow Coriolis Mass Flow Meter



### Low Flow Coriolis Mass Flow Meters for Liquid and Gases

mini CORI-FLOW™ Mass Flow Meters and Controllers are precise and compact instruments, based on the [Coriolis measuring principle](#), designed to cover the needs of the low flow market. Bronkhorst® model M14 Mass Flow Meter (MFM) is suited for highly accurate measurement of gas or liquid flow in the range 0... 30 kg/h (which corresponds with 0...400 l<sub>n</sub>/min when used on nitrogen) at operating pressures up to 200 bar (higher on request). The instruments are equipped with a robust IP65 weatherproof housing and are optionally available with ATEX approval for use in Zone 2 hazardous areas.

The instrument contains a microprocessor based pc-board with signal and fieldbus conversion and a PID controller for optional mass flow control by means of a separately mounted control valve or pump.

### Technical specifications

#### Measurement / control system

Flow rates	Liquid: 0...30 kg/h (nominal flow rate: 10 kg/h); Gas: 0...400 l <sub>n</sub> /min (N <sub>2</sub> ); Full Scale (FS) value is user-configurable
Mass flow accuracy	Liquid: ±0,2% Rd; Gas: ±0,5% Rd
Repeatability	± 0,05 % of rate ± ½(ZS* x 100/actual flow)%
Turndown ratio	up to 1:100
Zero stability (ZS)	< ± 6 g/h (Guaranteed at constant temperature and for unchanging process and environment conditions.)
Response time (sensor)	≤ 200 msec
Temperature effect	on zero: < 0,5 g/h/°C; on span: < 0,001% Rd/°C; self heating (at zero flow): < 15°C (Depends on flow rate, heat capacity fluid, T amb., T fluid and cooling capacity.)
Operating temperature	0 ... 70 °C; for ATEX Cat.3, Zone 2 max. 50°C
Mounting	any position, attitude sensitivity negligible. Instrument to be rigidly bolted to a stiff and heavy mass or construction for guaranteed zero stability. External shocks or vibrations should be avoided.
Temperature accuracy	± 0,5 °C
Density accuracy	< ± 5 kg/m <sup>3</sup>
Leak integrity, outboard	tested < 2 x 10 <sup>-9</sup> mbar l/s He
Warm-up time	> 30 min for optimum accuracy

## Mechanical parts

Sensor	single tube, DN 1.3
Material (wetted parts)	stainless steel 316L or comparable; optional: Hastelloy-C22
Housing	stainless steel 430F
Pressure rating (PN)	200 bar abs , higher on request
Process connections	compression type or face seal (VCR/VCO) couplings, or Tri-Clamp flanges (welded)
Seals	metal
Weight	1,1 kg
Ingress protection	IP65 (weatherproof)

## Electrical properties

Power supply	+15...24 Vdc +/- 10% Max. ripple recommended: 50 mV tt
Max. power consumption	3 W
Analog output	0...5 (10) Vdc, min. load impedance > 2 k $\Omega$ ; 0 (4)...20 mA (sourcing), max. load impedance < 375 $\Omega$
Analog setpoint	0...5 (10) Vdc, min. load impedance > 100 k $\Omega$ ; 0 (4)...20 mA (sourcing), max. load impedance ~ 250 $\Omega$
Digital communication	standard: RS232; options: PROFIBUS DP, DeviceNet™, Modbus RTU or FLOW-BUS

## Electrical connection

Analog/RS232	8-pin DIN (male);
PROFIBUS DP	bus: 5-pin M12 (female); power: 8-pin DIN (male);
CANopen® / DeviceNet™	5-pin M12 (male);
FLOW-BUS/Modbus-RTU/ASCII	5-pin M12 (male);

## Control valve options

### External actuator options to be connected to the controller

## Ex-proof specifications

## Approvals / certificates

Technical specifications subject to change without notice.

For dimensional drawings and hook-up diagrams please visit the [product page](#) on our [website](#)

## Recommended accessories



**E-8000 SERIES**

**Digital Readout / Control Systems**

Bright, wide angle, 1.8" display (TFT technology)  
User friendly operation, menu driven with 4 push buttons



**BRIGHT SERIES**

**Compact Local R/C Module**

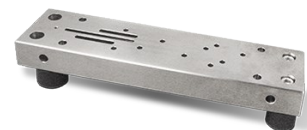
Bright, wide angle, 1.8" display  
User friendly operation  
Indication/operation/configuration



**PIPS SERIES**

**Plug-in Power Supply**

For lab-style or industrial devices  
Interchangeable plugs (Euro, UK, USA, Australian, IEC) for mains connection



**MOUNTING PARTS**

**Mass blocks and vibration dampeners**

To guarantee zero stability of low flow Coriolis instruments

## Related products



**MINI CORI-FLOW™ M14V14I**

Flow range 0...7 kg/h  
Pressure rating 100 bar  
Independent of fluid properties  
High accuracy, fast control



**MINI CORI-FLOW EX D XM14**

Flow range 0...30 kg/h  
Pressure rating 107 bar  
IECEX and ATEX Zone 1 approved  
Independent of fluid properties



**MINI CORI-FLOW™ M13**

Flow range 0...2000 g/h  
Pressure rating 200 bar  
Independent of fluid properties  
High accuracy, fast response



**MINI CORI-FLOW™ M15**

Flow range 0...300 kg/h  
Pressure rating 100 bar  
Independent of fluid properties  
High accuracy, fast response



**BRONKHORST USA LLC**

57 South Commerce Way

Suite 120

USA - Bethlehem, PA 18017

Tel. [+1-610-866-6750](tel:+16108666750)

[sales@bronkhorstusa.com](mailto:sales@bronkhorstusa.com)

