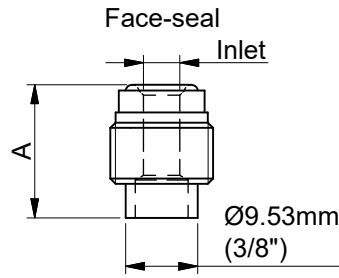


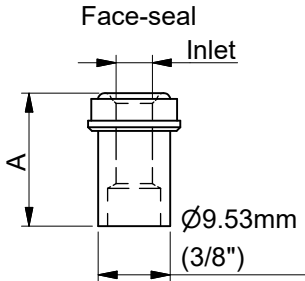
\*) Dimension A is typical finger-tight.

Compression type		3/8" tube
		A
adapter	3mm OD	18.0mm
adapter	6mm OD	19.2mm
adapter	8mm OD	26.6mm
adapter	10mm OD	39.7mm
adapter	12mm OD	42.4mm
adapter	1/16" OD	15.6mm
adapter	1/8" OD	18.1mm
adapter	1/4" OD	19.6mm
adapter	3/8" OD	26.6mm
adapter	1/2" OD	42.2mm



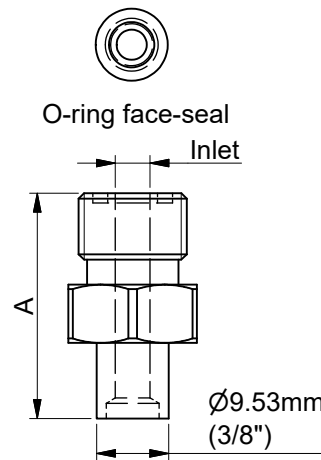
tol. dimension A = ±0.1

Face seal male		3/8" tube
		A
adapter	1/8" inlet	13.7 mm
adapter	1/4" inlet	17.6 mm
adapter	1/2" inlet	37.6 mm



tol. dimension A = ±0.1

Face seal female		3/8" tube
		A
adapter	1/4" inlet	17.6mm

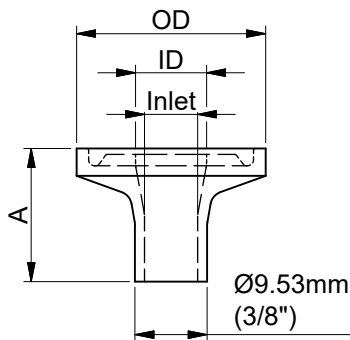


tol. dimension A = ±0.1

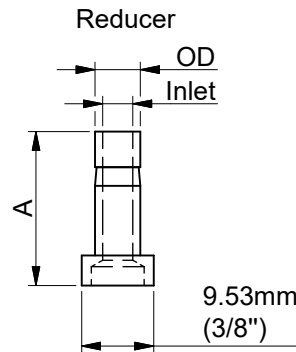
O-ring face seal		3/8" tube
		A
adapter	1/4" inlet	29.8mm

Tri Clamp		3/8" tube	Inlet	ID	OD
		A			
Tri Clamp	1/2" inlet	17.6mm	Ø7mm	Ø9.4mm	Ø25mm

Tri Clamp  
DIN32676-C



tol. dimension A = ±0.2



tol. dimension A = ±0.2

Reducer		3/8" tube
		A
Reducer	6mm OD	20.4mm
Reducer	1/4" OD	20.4mm

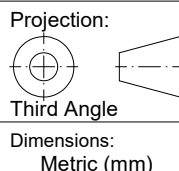
Title: Dimensions weld adapters

Drawn by: R.Kn.  
Date: 07-02-2007

Revision Description:  
Added dimensions tri clamp

Rev. by: M.H.  
Date: 18-01-2021

Checked: F.L.  
Date: 18-01-2021



Drawing no.:	<b>7.05.672</b>	Rev:	<b>G</b>	Scale:	1 : 1	A4
						Page: 1 - 1